

LAYER CAGE SYSTEMS



*CAGE SPECIFICATIONS

-275 gr/m² zinc-coated galvanized sheet of Tezcan and/or Assan brand is used for the frame of the coop.

- Beams on the frame of the coop are made of 2 mm galvanized sheet.

-Upper sections of coop's divisions are made of 1 mm galvanized sheet.

-Lower sections of coop's divisions are made of 0,6 mm galvanized sheet.

-Coop's division compartments are made of 0,6 mm galvanized wire.

-Colons forming the band bed of the coop is made of 0,8 mm galvanized sheet.

-Band carrying traverses of the coop are made of 1 mm galvanized pipe.

-Hook apparatus of the coop for poultry feeder are made of 2 mm galvanized sheet.

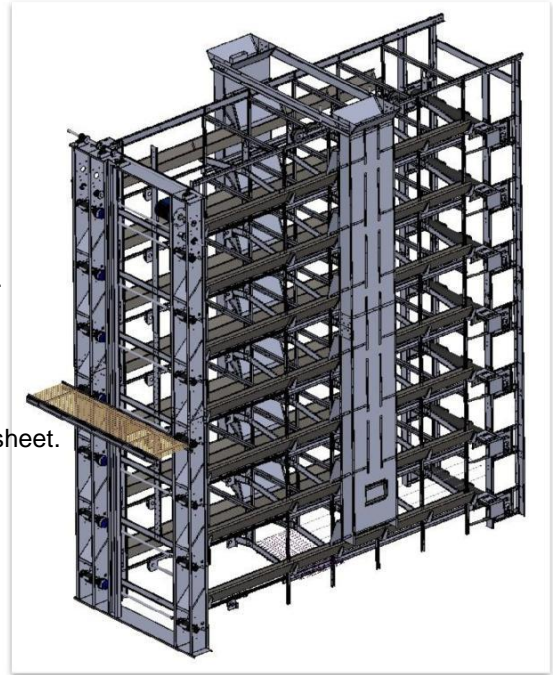
- Poultry feeders of the coop are made of 0,8 mm galvanized sheet

- Front beam and back casings of the coop are made of 3 mm galvanized sheet.

Front and back traverses of the coop are made of 2 mm galvanized sheet.

-Back compartments of the coop's divisions are woven with wire made of hot-dipped galvanizing.

-Bases of the coop's divisions are woven with wire made of hot-dipped galvanizing with division and 2 mm thickness.



*FEEDING SYSTEM

-Feeding system with feed cart is fully automatic; and entire system is made of galvanized sheet.

-Feed carts move on the rails on the coops by means of their 0,75 HP electric motors and import steel ropes (PVC coated)

-Poultry feeders are specially designed so that they can distribute equal feed stuff to each floor in coop systems and prevent the feed stuff from going outside the poultry feeder.

-Even one-day chicks are able to reach the feed stuff easily thanks to specially designed poultry feeders.



*DRINKING SYSTEM

-1 driking line made of pvc pipe is available on each division row.

- 2 flex and 2 ball CLR brand nipples are used on each coop division.
- 1 CLR brand reservoir is located on each watering line.
- Water coming from mains water system is sent to the drinking bowl in appropriate pressure by the reservoirs

Nipple lines are 22 x 22 mm pp square pipe and each section includes 3 nipples for 20 birds. All nipples are stainless steel. There is a "V" canal under of all nipple line. The drinking system is composed of Regulators.



* MANURE REMOVAL SYSTEM



-Manure is carried by Polypropylene plastic manure band which is located below each floor and takes the manure lying along the coop.

-Manure band has 1 mm thickness

-Movement in carriage is ensured by 1,5 hp reducer motors located in each 3 floors.

-Manure is perfectly transferred by the scrapers located on each floor over the discharge band at the end of the poultry house.

- Protection systems will be installed so as to prevent contamination arisen from splash of the manure at the back of the coop.

- Carrying rolls used on the tops are specially rubber-covered and thus, slip of the band is reduced to minimum.

-Manure transport conveyors consist of 6 mm thick rubber band with cord fabric running with moving rolls on the profile construction, front and back rolls and 1,5 HP gear motor.

ANKA KÜMES

* EGG COLLECTION SYSTEM

The egg collection system is available for both Lift and Elevator. The conveyor system is designed by using plastic pipes and return of conveyor is composed of Radius. Thanks to special design of the egg collectionsystem, cracked and broken egg number is decreased to minimum.

-A lift system reaching each floor by downward and upward movement is used.

-Automatic egg collection unit is made of galvanized sheet and material.

-Egg conveyor is manufactured as galvanized sheet casing.

-Conveyor motor has 0,75 HP, fabric band motor has 0,75 HP and lift motor has 0,75 HP.

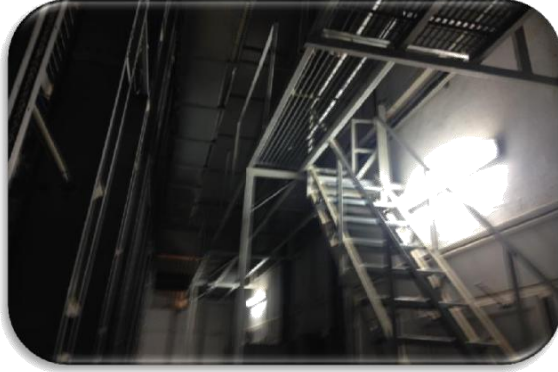
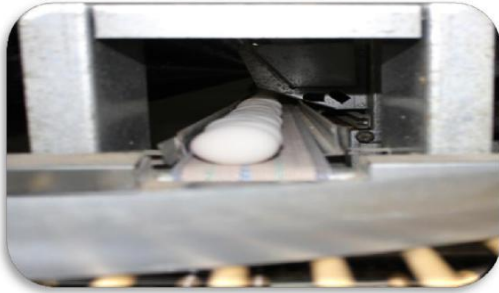
-Eggs are transferred with fabric egg bands and fittings are made of plastic.

-Fabric bands are antistatic and anti dust.

- Fabric bands extending and turning along the coops are moved with egg collection tops.

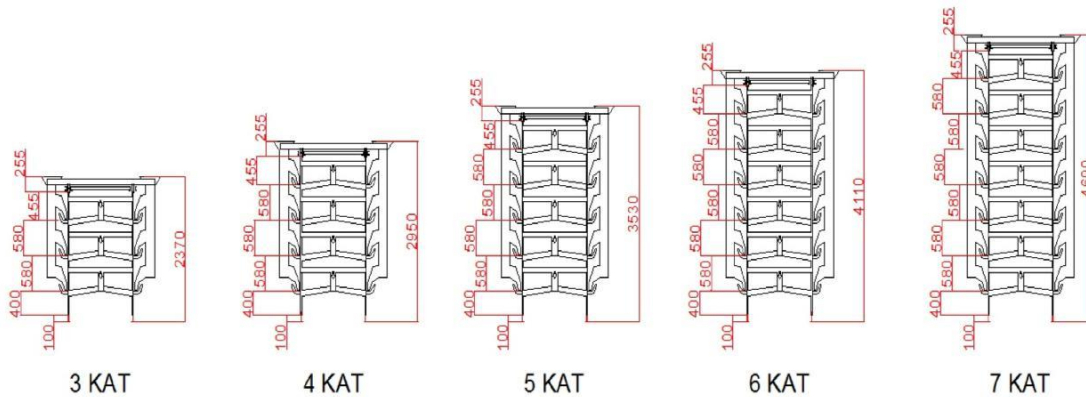
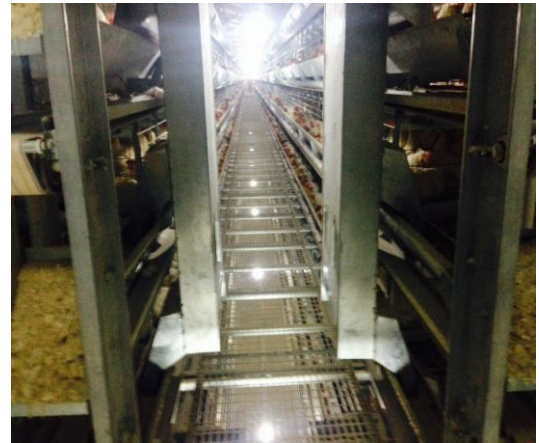
-Special brushes are located at the end of each row so as to keep the egg bands clean.



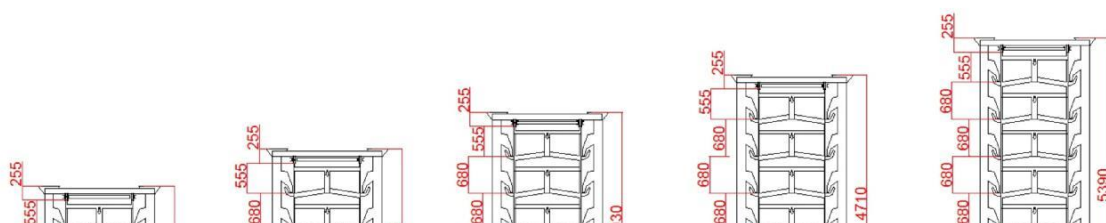


*** Podium system**

- This system is formed by making 2-floor walking trail between the cage
- It is easy to reach the upper floors of the cage by catwalk system.
- This system allows 8-floor cages to be used like 4-layer cages.
- Entire system is built on a steel construction.
- Ground floor and the 2nd Floor are connected to each other by a fixed steel stair.
- In this system, feed carts of the upper and lower floors are operated separately. Chain feeding model can also be used for feeding.



EKO YUMURTACI KAFES



ANKA KÜMES SAN. ve TİC.LTD.ŞTİ.
Aziziye Mah. Aziziye Sok. No:60/A Susurluk / BALIKESİR/TÜRKİYE-

Tel :+90 (266) 865 15 90 – Fax :+90(266) 865 15 91 - info@ankakumes.com.tr

